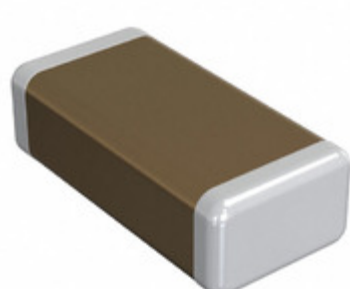


GCM31A7U2J221JX01D



INNOVATOR IN ELECTRONICS

Part Number: [GCM31A7U2J221JX01D](#)

Manufacturer: [Murata Electronics](#)

Description: CAP CER 220PF 630V U2J 1206

Data sheet: [Chip Monolithic Cap. Part Numbering](#)
[Chip Monolithic Automotive Catalog](#)

RoHS Status: Lead free / RoHS Compliant

Ship From: Hong Kong

Shipment Way: DHL/Fedex/TNT/UPS/EMS

Images are for reference only.
See Product Specifications for product details.
Buy GCM31A7U2J221JX01D with confidence from
Component-World.HK, 1 Year Warranty

[Request For Quotation](#)

PRODUCT PARAMETER

| | | | |
|---------------------------------------|-----------------------------|---|---|
| Part Number | GCM31A7U2J221JX01D | Manufacturer | Murata Electronics |
| Description | CAP CER 220PF 630V U2J 1206 | Lead Free Status / RoHS Status | Lead free / RoHS Compliant |
| Quantity Available | 557280 pcs | Data sheet | Chip Monolithic Cap. Part Numbering Chip Monolithic Automotive Catalog |
| Category | Capacitors | Voltage - Rated | 630V |
| Tolerance | ±5% | Thickness (Max) | 0.039" (1.00mm) |
| Temperature Coefficient | U2J | Size / Dimension | 0.126" L x 0.063" W (3.20mm x 1.60mm) |
| Series | GCM | Ratings | AEC-Q200 |
| Packaging | Tape & Reel (TR) | Package / Case | 1206 (3216 Metric) |
| Other Names | 490-5045-2 | Operating Temperature | -55°C ~ 125°C |
| Mounting Type | Surface Mount, MLCC | Moisture Sensitivity Level (MSL) | 1 (Unlimited) |
| Lead Style | - | Lead Spacing | - |
| Lead Free Status / RoHS Status | Lead free / RoHS Compliant | Height - Seated (Max) | - |
| Features | - | Detailed Description | 220pF ±5% 630V Ceramic Capacitor U2J 1206 (3216 Metric) |
| Capacitance | 220pF | Applications | Automotive |

Component-World.com is a Reliable Stocking Distributor of Electronic Components. We specialize in all Murata Electronics series electronic components. We have 557280 pieces of Murata Electronics GCM31A7U2J221JX01D in stock available now. Request a quote from electronics components distributor at Component-World.com, our sales team will contact you within 24 hours.
RFQ Email: info@Components-World.com

RELATED PRODUCTS

| | | | |
|--|--|--|---------------------|
| | Part#: GCM31A7U2J181JX01D Description: CAP CER 180PF 630V U2J 1206 | Manufacturers: Murata Electronics | RFQ |
| | Part#: GCM31A7U2J390JX01D Description: CAP CER 39PF 630V U2J 1206 | Manufacturers: Murata Electronics | RFQ |
| | Part#: GCM31A7U2J102JX01D Description: CAP CER 1000PF 630V U2J 1206 | Manufacturers: Murata Electronics | RFQ |
| | Part#: GCM31A7U2J271JX01D Description: CAP CER 270PF 630V U2J 1206 | Manufacturers: Murata Electronics | RFQ |
| | Part#: GCM31A7U2J120JX01D Description: CAP CER 12PF 630V U2J 1206 | Manufacturers: Murata Electronics | RFQ |
| | Part#: GCM31A7U2J121JX01D Description: CAP CER 120PF 630V U2J 1206 | Manufacturers: Murata Electronics | RFQ |
| | Part#: GCM31A7U2J150JX01D Description: CAP CER 15PF 630V U2J 1206 | Manufacturers: Murata Electronics | RFQ |
| | Part#: GCM31A7U2J101JX01D Description: CAP CER 100PF 630V U2J 1206 | Manufacturers: Murata Electronics | RFQ |
| | Part#: GCM31A7U2J561JX01D Description: CAP CER 560PF 630V U2J 1206 | Manufacturers: Murata Electronics | RFQ |
| | Part#: GCM31A7U2J180JX01D Description: CAP CER 18PF 630V U2J 1206 | Manufacturers: Murata Electronics | RFQ |
| | Part#: GCM31A7U2J100JX01D Description: CAP CER 10PF 630V U2J 1206 | Manufacturers: Murata Electronics | RFQ |
| | Part#: GCM31A7U2J330JX01D Description: CAP CER 33PF 630V U2J 1206 | Manufacturers: Murata Electronics | RFQ |
| | Part#: GCM31A7U2J220JX01D Description: CAP CER 22PF 630V U2J 1206 | Manufacturers: Murata Electronics | RFQ |
| | Part#: GCM31A7U2J270JX01D Description: CAP CER 27PF 630V U2J 1206 | Manufacturers: Murata Electronics | RFQ |
| | Part#: GCM31A7U2J470JX01D Description: CAP CER 47PF 630V U2J 1206 | Manufacturers: Murata Electronics | RFQ |
| | Part#: GCM31A7U2J391JX01D Description: CAP CER 390PF 630V U2J 1206 | Manufacturers: Murata Electronics | RFQ |
| | Part#: GCM31A7U2J471JX01D Description: CAP CER 470PF 630V U2J 1206 | Manufacturers: Murata Electronics | RFQ |
| | Part#: GCM31A7U2J560JX01D Description: CAP CER 56PF 630V U2J 1206 | Manufacturers: Murata Electronics | RFQ |
| | Part#: GCM31A7U2J151JX01D Description: CAP CER 150PF 630V U2J 1206 | Manufacturers: Murata Electronics | RFQ |
| | Part#: GCM31A7U2J331JX01D Description: CAP CER 330PF 630V U2J 1206 | Manufacturers: Murata Electronics | RFQ |

Related keywords for GCM31A7U2J221JX01D

| | | | |
|---------------------------------------|--------------------------------|----------------------------------|----------------------------------|
| Murata Electronics GCM31A7U2J221JX01D | GCM31A7U2J221JX01D distributor | GCM31A7U2J221JX01D supplier | GCM31A7U2J221JX01D price |
| GCM31A7U2J221JX01D download datasheet | GCM31A7U2J221JX01D datasheet | GCM31A7U2J221JX01D stock | buy GCM31A7U2J221JX01D |
| Murata Electronics GCM31A7U2J221JX01D | MURATA GCM31A7U2J221JX01D | Murata Electronics North America | TOKO / Murata GCM31A7U2J221JX01D |
| | | GCM31A7U2J221JX01D | |